



METRO

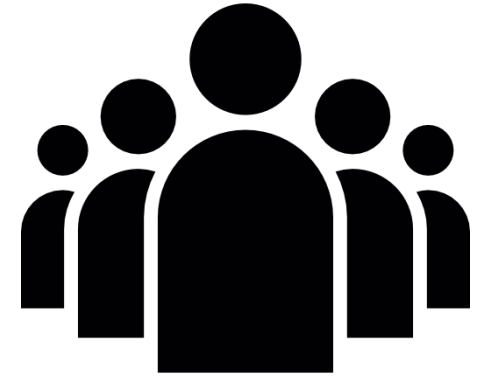
Embrace Difference



Our rules

- Have **respect** for everyone
- **Listen** to each other's ideas
- Keep things in this room
- Work **together**
- Understand this is a safe space to make “mistakes”

Please ask questions!



Today we are learning...



... about what gender means to us and society.

... about how being seen as different can affect how people are treated.

...about people's experience of being seen different to others in school.

I can...

- ... explain the meaning of gender.
- ... explain the meaning of sexuality.
- ... describe what “gender stereotypes” are and how they influence us.
- ... identify how some LGBTQ+ people may be made to feel different to others.
- ... suggest ways we can all help stop people being bullied for being different.
- ... explain how to get help for myself or other people.



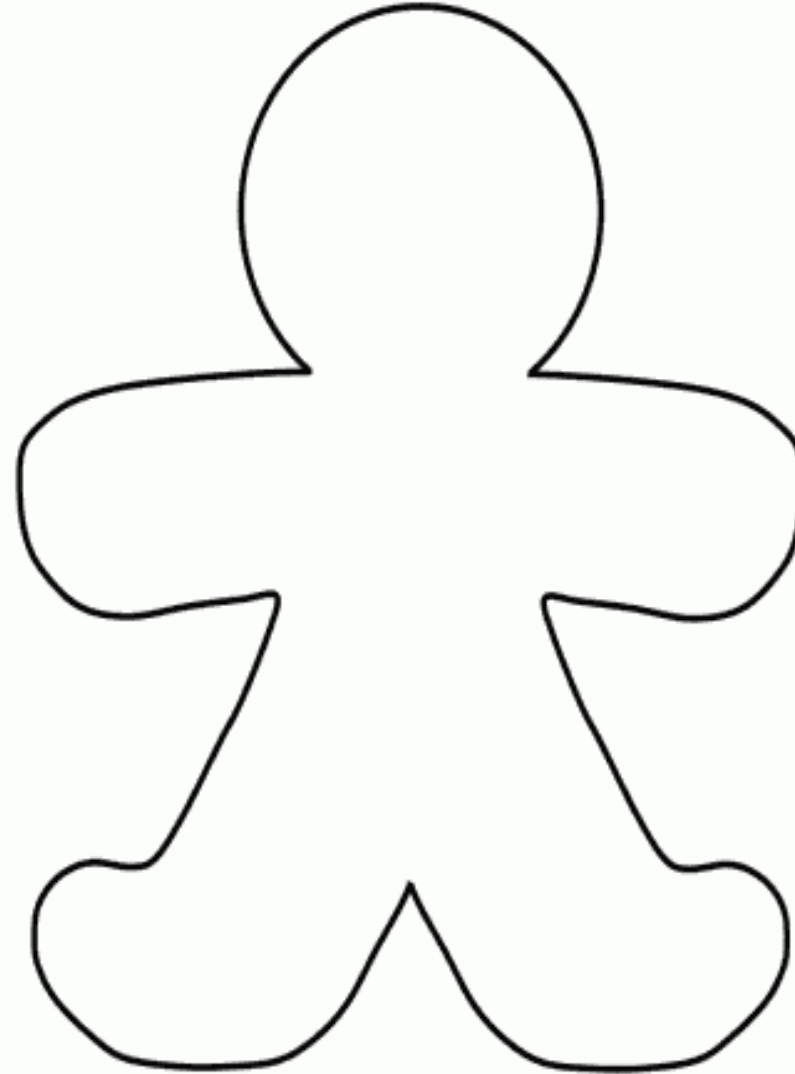
What is gender?



If you are finished: Can we tell someone's gender by looking at them?

Task:

1. In your groups, you will be given one plain diagram of the Genderbread Person.
2. On that sheet, I want you to label what you think **society** thinks a boy and girl should look like and be like.
3. Think about the **characteristics** and what they **might like doing**, according to what society says.



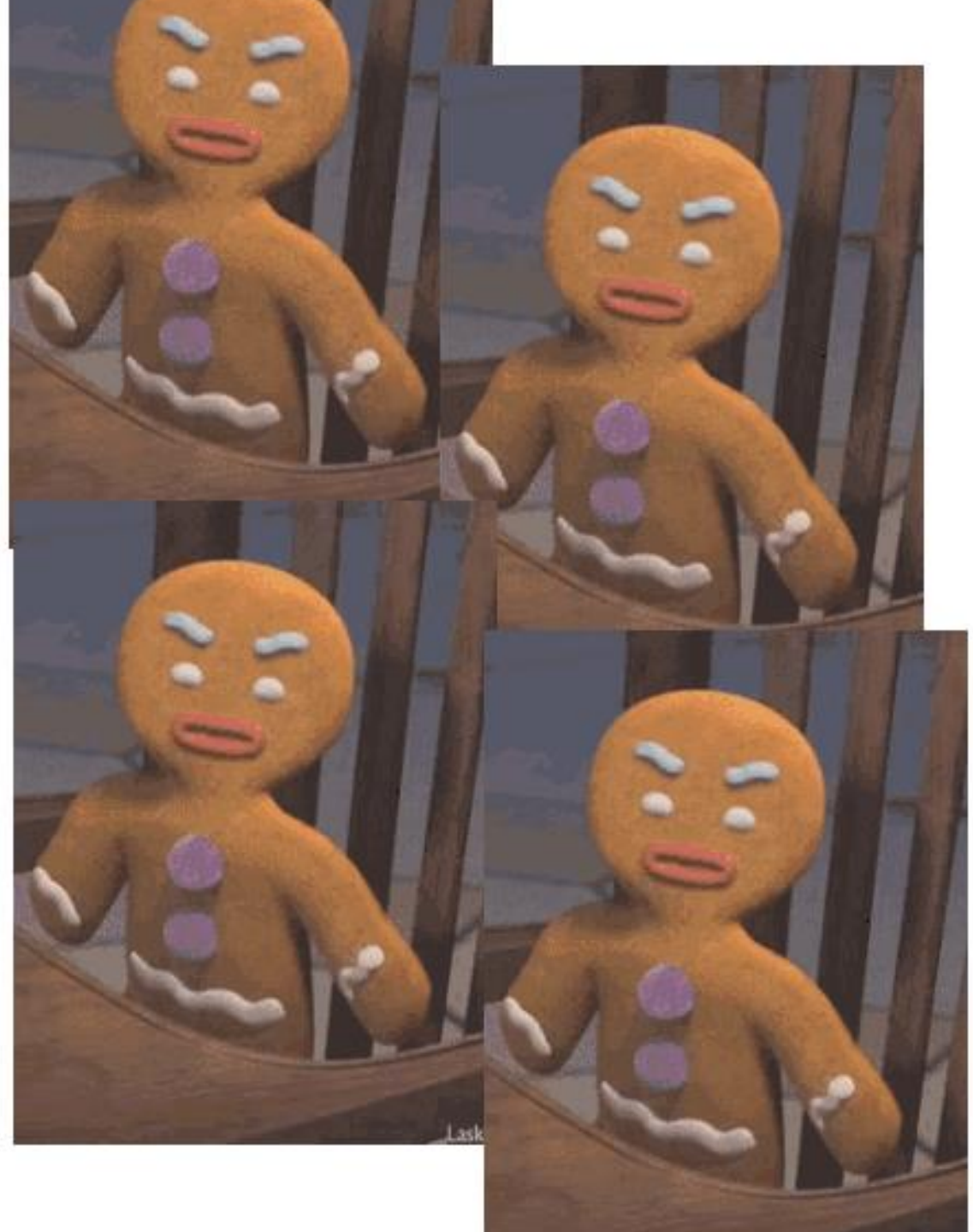
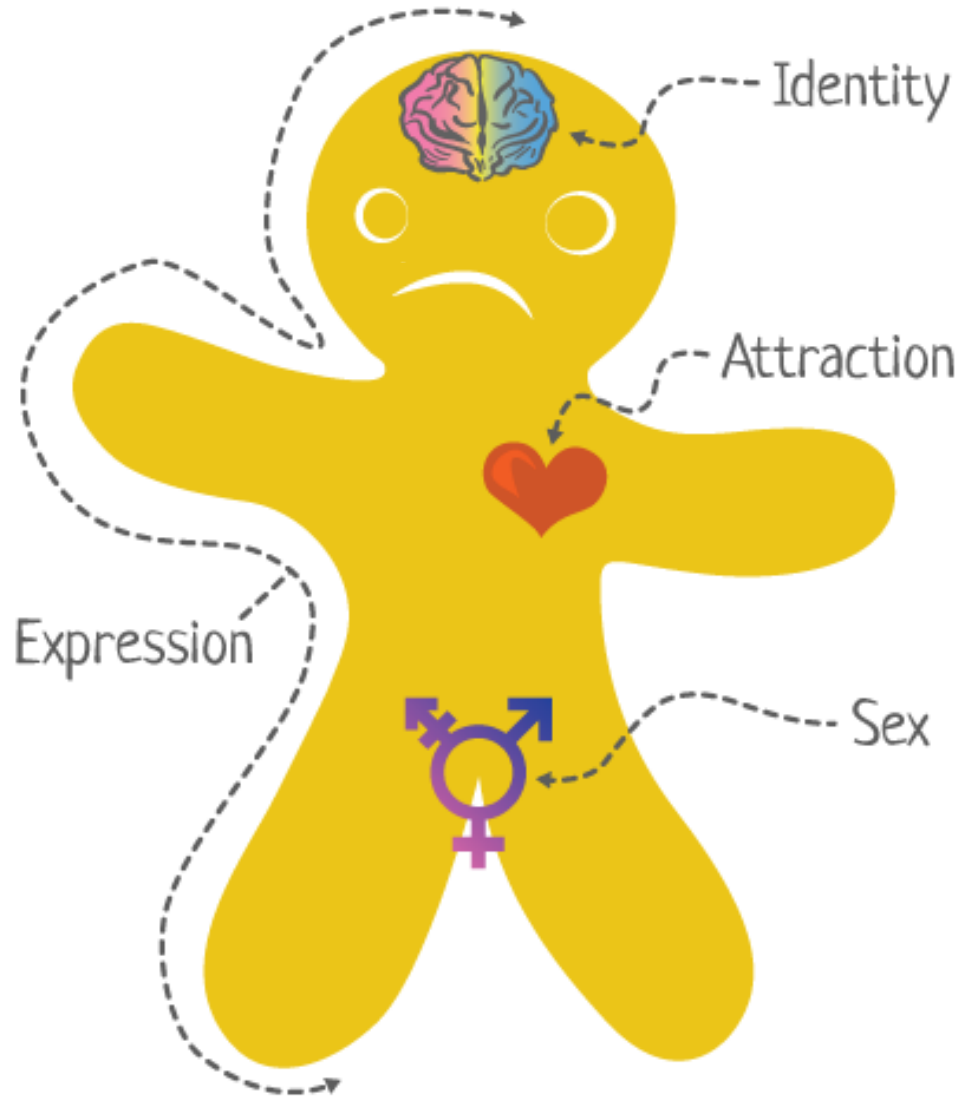
What is sexuality?

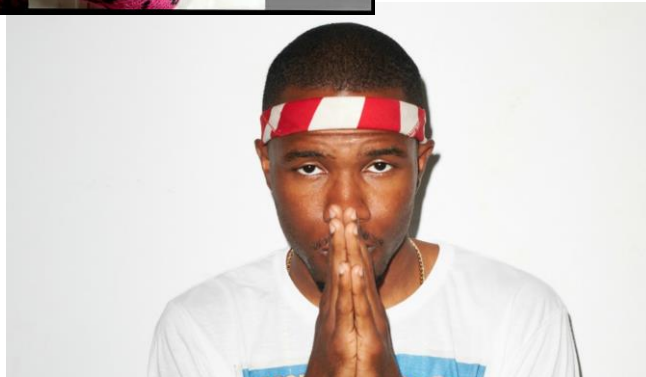


If you are finished: Can we tell someone's sexuality by looking at them?

The Genderbread Person







The Equality Act

It is **illegal** to treat someone unfairly because of who they are attracted to, or their identity.



1. Decide what **you are going to do** to make sure everyone is respected in your school.
2. Write it neatly onto your genderbread person
3. Decorate your genderbread person however you like.

Question time



Everyone needs to write down a question or a comment on their post-it note.

You will then put it into the box.

No one will know who has asked which question.

We will answer as many as we can!

I can...

- ... explain the meaning of gender.
- ... explain the meaning of sexuality.
- ... describe what “gender stereotypes” are and how they influence us.
- ... identify how some LGBTQ+ people may be made to feel different to others.
- ... suggest ways we can all help stop people being bullied for being different.
- ... explain how to get help for myself or other people.





METRO

Embrace Difference

PSHE Association
Quality Assured
Resource

PSHE
Association

 **METRO**
Embrace Difference