

Home Learning - Science

Session 1

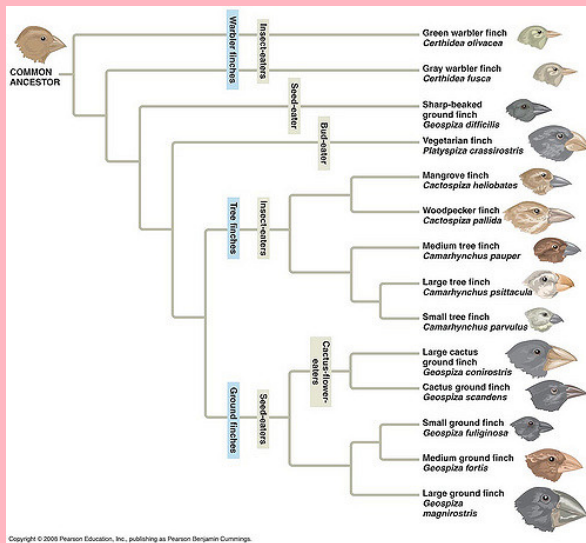
L.O - To understand how animals **adapt** to survive in different environments.



What is different?

What is the same?

During Darwin's voyage, he stopped in the Galapagos Islands. He noticed that on each island there was the same bird (a finch), however on each island the finches had different beaks. Why might this be?



Watch this YouTube video to find out more!

Evolution by Natural Selection - Darwin's Finches | Evolution | Biology FuseSchool

<https://youtu.be/s64Y8sVYfFY>

Living things compete with each other in order to survive in different environments. A species (for example, a finch) have to adapt so they can access all the resources in their environment. Any adaptations will then be passed on to the next generation in order for them to survive.

The animals that do not adapt to their environment will often die out as they do not have the features to survive. We call this 'survival of the fittest'