

Maths machine

INPUT

431

36

252

584

813

RULE: ADD 367 TO
MY INPUT NUMBER



OUTPUT



Complete the following sequences

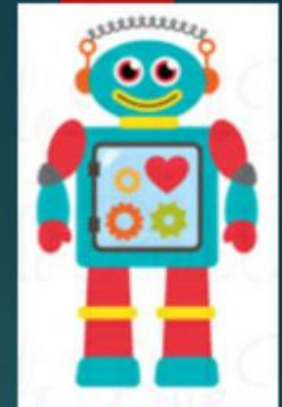
0, 58, 116, _____, _____, 290, _____,

0, 153, _____, 459, _____, 765, _____,

100, 267, _____, _____, 768, _____, _____,



Fill in the missing numbers using the digit cards below to complete the addition. You are only allowed to use a digit card once.



$$\square \square + \square \square = 139$$

6

8

2

3

5

.....
+

Fill in the missing numbers using the digit cards below to complete the addition. You are only allowed to use a digit card once.



$$\square \square + \square \square = 136$$

8 9 5 7 4

.....
+

Fill in the missing numbers on the digit cards.

$$\begin{array}{r} \quad \boxed{3} \quad \boxed{} \quad \boxed{5} \\ + \quad \boxed{} \quad \boxed{2} \quad \boxed{} \\ \hline 6 \quad 9 \quad 2 \\ \hline 1 \end{array}$$



Fill in the missing numbers on the digit cards.

$$\begin{array}{r} \quad \boxed{} \quad \boxed{6} \quad \boxed{} \\ + \quad \boxed{3} \quad \boxed{} \quad \boxed{4} \\ \hline 5 \quad 4 \quad 3 \\ \hline 1 \quad 1 \end{array}$$

