

# Maths machine

INPUT

431

36

252

584

813

RULE: ADD 367 TO  
MY INPUT NUMBER



OUTPUT

798

403

619

951

1180

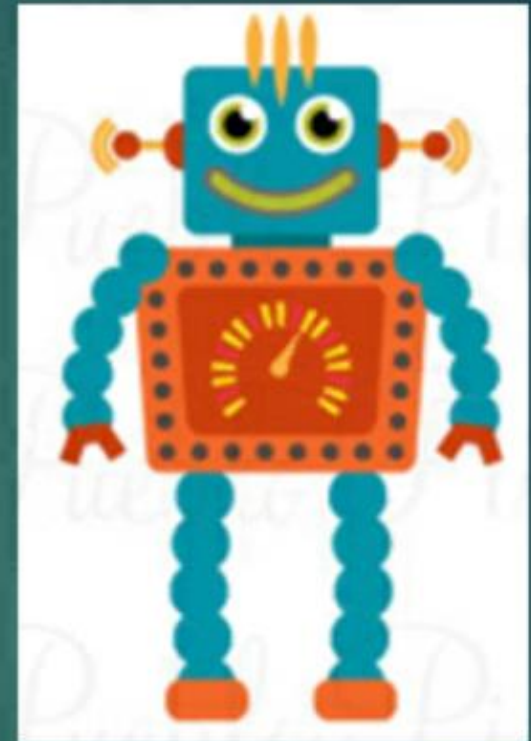


Complete the following sequences

0, 58, 116, 174, 232, 290, 348,

0, 153, 306, 459, 612, 765, 918,

100, 267, 434, 601, 768, 935, 1102,



Fill in the missing numbers using the digit cards below to complete the addition. You are only allowed to use a digit card once.



$$\begin{array}{|c|} \hline 8 \\ \hline \end{array} \begin{array}{|c|} \hline 6 \\ \hline \end{array} + \begin{array}{|c|} \hline 5 \\ \hline \end{array} \begin{array}{|c|} \hline 3 \\ \hline \end{array} = 139$$

Or  $56 + 83$

$$\begin{array}{|c|} \hline 6 \\ \hline \end{array} \begin{array}{|c|} \hline 8 \\ \hline \end{array} \begin{array}{|c|} \hline 2 \\ \hline \end{array} \begin{array}{|c|} \hline 3 \\ \hline \end{array} \begin{array}{|c|} \hline 5 \\ \hline \end{array}$$

.....
+ .....
_____
_____

Fill in the missing numbers using the digit cards below to complete the addition. You are only allowed to use a digit card once.



$$\begin{array}{|c|} \hline 8 \\ \hline \end{array} \begin{array}{|c|} \hline 9 \\ \hline \end{array} + \begin{array}{|c|} \hline 4 \\ \hline \end{array} \begin{array}{|c|} \hline 7 \\ \hline \end{array} = 136$$

Or  $49 + 87$

$$\begin{array}{|c|} \hline 8 \\ \hline \end{array} \begin{array}{|c|} \hline 9 \\ \hline \end{array} \begin{array}{|c|} \hline 5 \\ \hline \end{array} \begin{array}{|c|} \hline 7 \\ \hline \end{array} \begin{array}{|c|} \hline 4 \\ \hline \end{array}$$

.....
+ .....
_____
_____

Fill in the missing numbers on the digit cards.

$$\begin{array}{r} \phantom{+} \begin{array}{ccc} \boxed{3} & \boxed{6} & \boxed{5} \\ \boxed{3} & \boxed{2} & \boxed{7} \end{array} \\ \hline 6 & 9 & 2 \\ \hline & 1 & \end{array}$$



Fill in the missing numbers on the digit cards.

$$\begin{array}{r} \phantom{+} \phantom{1} \phantom{6} \phantom{9} \\ + \phantom{1} \phantom{6} \phantom{9} \\ \hline \phantom{1} \phantom{6} \phantom{9} \\ \hline \phantom{1} \phantom{6} \phantom{9} \\ \hline \phantom{1} \phantom{6} \phantom{9} \end{array}$$

The image shows a vertical addition problem on a dark teal background. The top row consists of three green rounded square digit cards with numbers 1, 6, and 9. The second row starts with a white plus sign followed by three more green rounded square digit cards with numbers 3, 7, and 4. Below these are two horizontal white lines. The third row contains the numbers 5, 4, and 3. The bottom row contains the numbers 1, 1, and 1.

