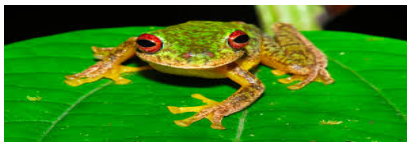


Day 5 Fluency 10

10 questions in 10 minutes...are you up for the challenge?

Going through the answers and discussing them is even more important than them completing the task...

- 1) $23 - 11 =$
- 2) $25 + 19 =$
- 3) Ten less than 18 is ?
- 4) Eleven more than 10 is ?
- 5) Half of 16 is ?
- 6) Write the four number sentences for these 3 numbers.... 10, 7 and 3
- 7) Write 32 in words
- 8) $10 \times 10 = ?$
- 9) 5, 10, 15, ?, ?, ?
- 10) 6 is 7 less than ?



Frog Challenge 5



Fact Families	Fact Families
<p>1a. Use the number cards below to find two fact families.</p> <p style="text-align: center;">4 5 1 8</p> <p>$\square + \square = 9$</p> <p>$9 - \square = \square$</p> <p>Write all of the possible number sentences.</p>	<p>1b. Use the number cards below to find two fact families.</p> <p style="text-align: center;">4 2 3 5</p> <p>$\square + \square = 7$</p> <p>$7 - \square = \square$</p> <p>Write all of the possible number sentences.</p>
<p>2a. Amy has collected 5 shells. Use the images to write two addition number sentences.</p> <p>Using the addition sentences, write the subtraction sentences that would complete the fact family.</p>	<p>2b. Bob has 4 sweets. Use the images to write two addition number sentences.</p> <p>Using the addition sentences, write the subtraction sentences that would complete the fact family.</p>
<p>3a. Ben says,</p> <p>I can use the numbers 7, 3 and 4 to write a fact family for the 10 frame.</p>	<p>3b. Jon says,</p> <p>I can use the numbers 7, 3 and 2 to write a fact family for the 10 frame.</p>

I need to thank Classroom Secrets for the task today. They have produced a free PDF with a series of fact family questions for you to try...

There are 3 levels of difficulty for you to choose from and an answer sheet to help with marking your work.

These are trickier questions that need you to reason and solve problems!

Good luck!