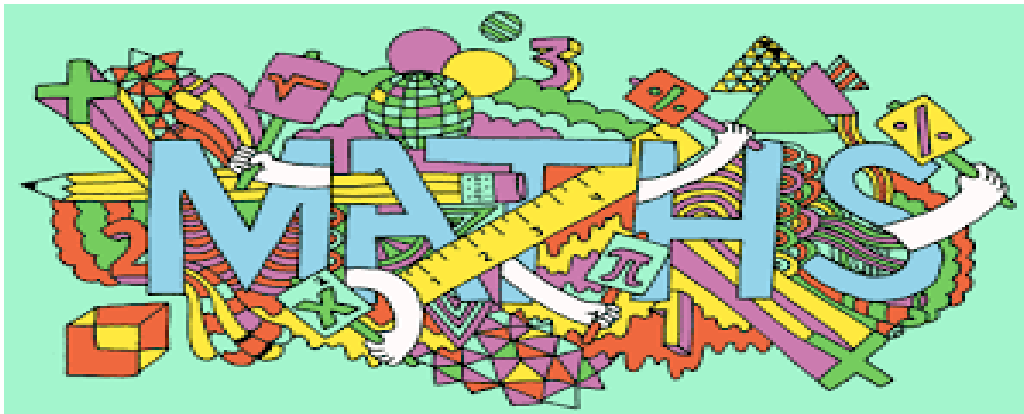


Year 2

Home Learning



SO, WHAT'S THE PLAN?

We understand printing is sometimes very tricky. If appropriate, please just get the children to write the answers on paper whilst looking at the sheets/ questions online. After your lovely feedback, we have tried to keep printing to a minimum and, as always, you can choose to do 1, 2 or all 3 of the tasks.

Each day, there will be...

- 10 "Fluency Ten" questions

Questions all about the basics of maths and the skills we work on throughout the whole year

- A choice of 2 tasks

Frog Challenge - *worksheet/ exercise book based task*

Monkey Challenge - *computer based task*

- Extra optional tasks

Day 1 Fluency 10

10 questions in 10 minutes...are you up for the challenge?

Going through the answers and discussing them is even more important than them completing the task...

- 1) $34 + 12 =$
- 2) $28 + 16 =$
- 3) Write a number bond to 10
- 4) $10 \times 5 =$
- 5) $8 + 4 =$ (Build your bridge!)
- 6) Ten more than 30 = ?
- 7) Use the inequality signs to complete this number sentence
 $22 \begin{matrix} \text{Greater} \\ \text{Than} \end{matrix} \begin{matrix} \text{Less} \\ \text{Than} \end{matrix} \begin{matrix} \text{Equal} \\ \text{To} \end{matrix} 21$
 $> < =$
- 8) Double 8 = ?
- 9) Half of 20 = ?
- 10) One less than 87 = ?

Our math's objectives...

add and **subtract** numbers using concrete objects, pictorial representations, and mentally, including:

1. a two-digit number and 1s
2. a two-digit number and 10s
3. 2 two-digit numbers

All about subtraction...



**TODAY'S
LEARNING**

Subtraction

take away
decrease minus
less left
take — left
fewer subtract
how many more
 difference

Draw your place value chart
You must only draw your **BIGGEST** number because we are taking things away from this!

Now take away your smaller number... how many do you have left?

Example $24 - 11 = 13$

Tens	Ones
 	• • • •

Step 1

Tens	Ones
 	• • • •

Step 2



Frog Challenge 1

Solve these subtraction problems using the same technique as the page before...

$18 - 6 =$

$27 - 11 =$

$45 - 22 =$

$56 - 34 =$

$88 - 62 =$

$79 - 55 =$

Challenge...

Sam has 30 grapes.

She eats 14 grapes.

How many grapes are left?





Optional Extra Maths

Try these tasks and web based games to help you keep on top of your maths...

(All children should have their logins for the web based platforms. If not, please email and your teacher will endeavor to send them to you)

Choose a game or idea from the extra activity idea sheet

Purple Mash - login and find the assigned games

TT Rockstars - login and have a go at your 2's, 5's and 10's

Numbots - login to rehearse your very important number bonds

Topmarks - an amazing website with a range of interesting games to play

If you have any questions
please email...

keystage1@cookridgeprimarys
chool.org.uk