

# Day 3 Fluency 10

10 questions in 10 minutes...are you up for the challenge?

*Going through the answers and discussing them is even more important than them completing the task...*

- 1)  $56 - 21 =$
- 2)  $67 - 23 =$
- 3)  $47 + 34 =$
- 4)  $12 \times 0 =$
- 5)  $9 + 7 =$  (Build your bridge!)
- 6) Ten less than 12 = ?
- 7) Use the inequality signs to complete this number sentence  
 $3 \times 10$       Greater Than   Less Than   Equal To       $13 + 11 =$   
 $>$     $<$     $=$
- 8) Double 1 = ?
- 9) Half of 2 = ?
- 10) One less than one hundred = ?

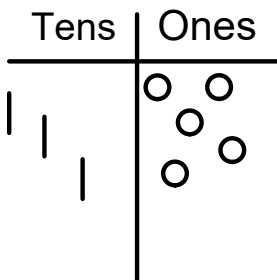


$35 - 7 =$

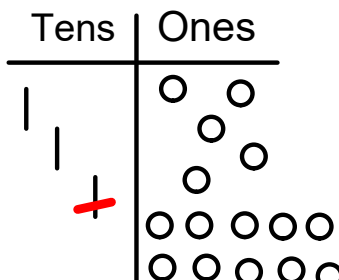
Draw your place value chart

You must only draw your BIGGEST number because we are taking things away from this!

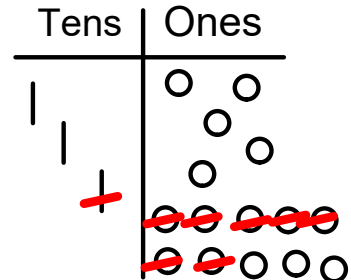
Now take away your smaller number... what happens if we don't have enough to subtract? **We borrow!**



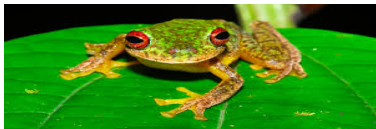
We don't have enough ones to subtract 7 of them! Where could we get more ones?



We borrow 10 ones from the tens column. Now we have 15 ones so we can subtract 7...



I have 8 ones left and 2 tens left. My answer is 28.



## Frog Challenge 3

Solve these subtraction problems using the same technique as the page before...

$$24 - 8 =$$

$$31 - 9 =$$

$$45 - 7 =$$

$$81 - 7 =$$

$$76 - 8 =$$

$$35 - 6 =$$