

Day 4 Fluency 10

10 questions in 10 minutes...are you up for the challenge?

Going through the answers and discussing them is even more important than them completing the task...

- 1) $89 - 21 =$
- 2) $67 + 23 =$
- 3) $23 - 5 =$
- 4) $32 - 8 =$
- 5) $39 + 4 =$ (Build your bridge!)
- 6) Ten more than 3 = ?
- 7) Use the inequality signs to complete this number sentence
 $8 + 2$ $8 + 2$ $13 - 3 =$
Greater Than Less Than Equal To
 $>$ $<$ $=$
- 8) Double 4 = ?
- 9) Half of 6 = ?
- 10) $12 \times 5 =$



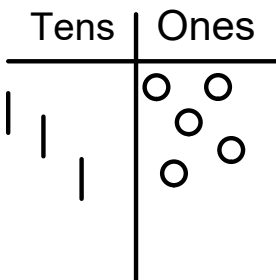
Find the "Teaching video 4" video to find out what we are learning about today...

Draw your place value chart

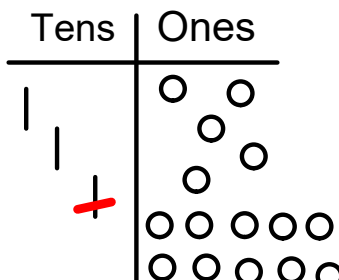
You must only draw your BIGGEST number because we are taking things away from this!

Now take away your smaller number... what happens if we don't have enough to subtract? We borrow!

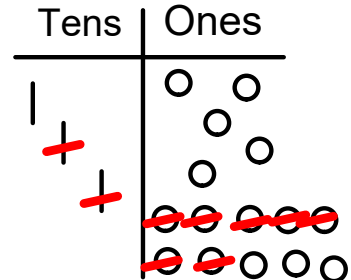
$35 - 17 =$



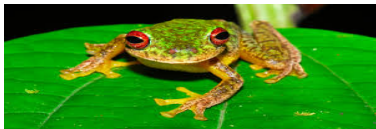
We don't have enough ones to subtract 7 of them! Where could we get more ones?



We borrow 10 ones from the tens column. Now we have 15 ones so we can subtract 7 now...



I have 8 ones left but **still need to subtract my 1 ten because it is 17**. I have 8 ones left and 1 ten so my answer is 18.



Frog Challenge 4

Solve these subtraction problems using the same technique as the page before...

$$31 - 14 =$$

$$44 - 16 =$$

$$63 - 15 =$$

$$41 - 23 =$$

$$55 - 29 =$$

$$73 - 36 =$$