

Can you solve these calculations?

$$\begin{array}{r} \overset{9}{0} \overset{11}{103} \\ - \quad 45 \\ \hline 58 \end{array}$$

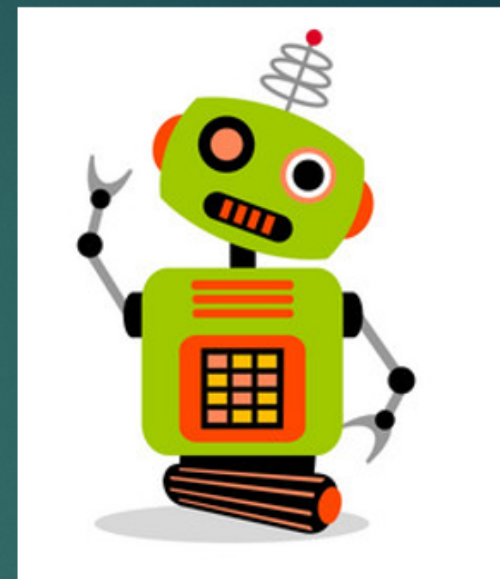
$$\begin{array}{r} \overset{9}{1} \overset{11}{202} \\ - \quad 126 \\ \hline 76 \end{array}$$

$$\begin{array}{r} \overset{9}{3} \overset{11}{407} \\ - \quad 208 \\ \hline 199 \end{array}$$

$$605 - 256 = 349$$

$$501 - 163 = 338$$

$$804 - 88 = 716$$



# Treasure hunt



Pirate Pete needs your help to cross the board and reach the treasure. Answer the number sentences below using column addition and column subtraction to help him step on the safe spaces.

$$132 + 89 = 221$$

$$708 - 439 = 269$$

$$421 + 288 = 709$$

$$559 - 273 = 286$$

$$624 - 155 = 469$$

$$679 + 213 = 892$$

321	874	892	287
222	121	669	286
341	69	221	111
707	269	609	708
331	709	459	111
891	992	469	479

