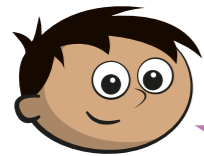


# Subtract 2 mixed numbers

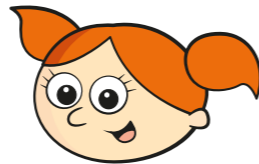
1 Amir and Alex are working out  $3\frac{1}{2} - 2\frac{1}{4}$



Amir

First subtract 2 from 3,  
then subtract  $\frac{1}{4}$  from  $\frac{1}{2}$   
That leaves  $1\frac{1}{4}$

Convert to an improper  
fraction first,  $\frac{7}{2} - \frac{9}{4}$ , then  
 $\frac{14}{4} - \frac{9}{4} = \frac{5}{4} = 1\frac{1}{4}$



Alex

Whose method do you prefer?

2 Use your preferred method to complete the subtractions.

a)  $4\frac{4}{5} - 2\frac{3}{10} = \square$

c)  $16\frac{1}{2} - 5\frac{1}{4} = \square$

b)  $3\frac{5}{8} - 1\frac{1}{4} = \square$

d)  $10\frac{5}{6} - 5\frac{5}{12} = \square$

What do you notice about your answer to part d)?

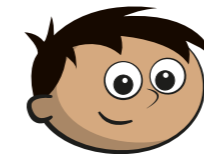
3 Car A travels for  $15\frac{1}{4}$  miles.  
Car B travels for  $21\frac{5}{12}$  miles.



How much further does Car B travel than Car A?

Car B travels  miles further than Car A.

4 Amir and Dora are working out  $4\frac{1}{5} - 1\frac{2}{5}$



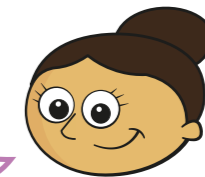
Amir

You can't use my  
method because you can't do  
 $\frac{1}{5} - \frac{2}{5}$

a) Do you agree with Amir?

b)

I know that  $4\frac{1}{5} = 3\frac{6}{5}$



Dora

How does this help you to work out the subtraction?

---



---

c) Complete the calculation.

$4\frac{1}{5} - 1\frac{2}{5} = \square$

5 Complete the subtractions.

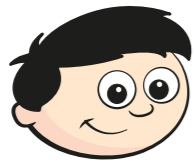
a)  $4\frac{4}{5} - 2\frac{9}{10} = \square$

c)  $5\frac{2}{7} - 2\frac{11}{14} = \square$

b)  $3\frac{5}{8} - 1\frac{3}{4} = \square$

d)  $2\frac{1}{6} - 1\frac{7}{18} = \square$

6 Dexter is subtracting fractions.



$5\frac{2}{3} - 3\frac{5}{6} = 2\frac{1}{6}$

Explain the mistake that Dexter has made.

---

---

---

7 Here are some number cards.

$3\frac{1}{12}$

$4\frac{1}{2}$

$2\frac{5}{24}$

$4\frac{5}{6}$

a) Use two of the number cards to find the smallest difference.

$\square - \square = \square$

b) Use two of the number cards to find the difference closest to 2

$\square - \square = \square$

8 Complete the magic square.

The total of each column is  $5\frac{7}{20}$

The total of each row is  $5\frac{7}{20}$

$1\frac{1}{2}$	$1\frac{3}{5}$	
	$1\frac{7}{20}$	$1\frac{7}{10}$

9 A marathon is  $26\frac{1}{5}$  miles.

Dexter has run  $18\frac{1}{10}$  miles.

Eva has run  $19\frac{3}{5}$  miles.

a) How much further has Eva run than Dexter?

$\square$  miles

b) How much further does Eva need to run to complete the marathon?

$\square$  miles

