



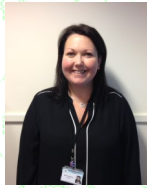
Year 1/2 Newsletter

Spring 1-KS1



KS1 Teaching Team

Class One



Mrs Koopman
KS1 Phase
Leader



Mrs Williams



Miss Robinson

Class Two



Mrs Harrison
HLTA



Miss Boyd



Mrs Pattison

Class Three

English

This term we will be focusing on a variety of genres. We will begin by reading a range of books which are linked to our Great Fire of London topic. We will continue to have a specific focus on phonics and reading, to develop fluency skills.

Reading

Please encourage your child to read at least three times a week at home, for at least 15 minutes each time. Your child will be given a reading diary, we encourage you to make notes about your child's reading. These will be checked regularly. Books can be changed daily.



Maths

In Maths –Year One this term we are focusing on addition and subtraction to 20 with lots of practical outdoor activities.

Year Two– Multiplication and division.

We encourage the children to explain and reason how they got their answers and work on problem solving tasks to deepen their knowledge of Maths.

Music

Year 1:

s-m songs with actions
Speech rhythm grid (Great Fire of London words)
Firework Music

Year 2:

l-s-m songs with actions
speech rhythm grid (Great Fire of London words)
Firework music

Science/ D.T /ICT

Science:

I can observe changes across the four seasons.

Art:

Colour theory- Explore warm and cool colours in artists work- Matisse.

ICT:

ALGORITHMS

P.E

PE kit should be worn to school on the day of PE. All children need inside pumps to stay in school. Please name ALL items of clothing.



Geography/History

Geography- Locational Knowledge

History-Historical Interpretations-Great Fire of London

R.E / PSHE

RE-Year 1 – Religious leaders/ Year 2 – Jesus' life

PSHE–Living in the Wider World

Year 1 – Diverse Britain

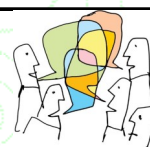
Year 2 – One World

Forest Schools

Forest Schools is on Monday 16th January as it is a bank holiday the first Monday.

It would be really helpful if your child came to school in warm, waterproof clothing, with a pair of wellies and some indoor shoes to change into as the weather getting worse.

If you have any questions, concerns or want to discuss any aspect of your child's learning, please contact the office to arrange a time to speak to a member of the Year 1/2 teaching team before or after school, on any day!



Attendance

Thank you for sending your children to school every day and arriving at their designated time so that we are all ready to begin the days learning. As you know, 'Every Day Counts'

