



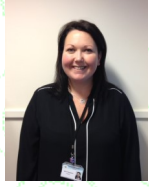
# Year 1/2 Newsletter

## Spring 1-KS1



### KS1 Teaching Team

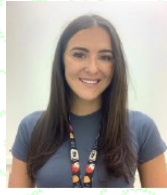
Class One



Mrs Koopman  
KS1 Phase  
Leader



Mrs Williams



Miss Robinson

Class Two



Mrs Harrison  
HLTA



Miss Boyd

Class Three



Mrs Pattison

#### English

This term we will be focusing on a variety of genres, both narrative and non-narrative. We will begin by reading a range of books which are linked to our weather topic. We will continue to have a specific focus on phonics and reading, to develop fluency skills.

#### Reading

Please encourage your child to read at least three times a week at home, for at least 15 minutes each time. Your child will be given a reading diary, we encourage you to make notes about your child's reading. These will be checked regularly. Books can be changed daily.



#### Maths

In Maths –Year One this term we are focusing on **addition and subtraction to 20** with lots of practical outdoor activities. Year Two– Multiplication and division. We encourage the children to explain and reason how they got their answers and work on problem solving tasks to deepen their knowledge of Maths.

#### Music

Year 1:

s-m songs with actions  
Weather Songs  
tuned percussion simple drones  
MMC listening

Year 2:

l-s-m songs with actions  
Weather Songs  
stick notation drones on tuned percussion  
MMC listening

#### Science/ D.T /ICT

##### Science:

I can observe and describe weather associated with the seasons and how day length varies.

##### Art:

Andy Goldsworthy: make collagraph using natural materials. Printmaking. Sculpture

##### ICT:

BEE BOTS

#### P.E

PE kit should be worn to school on the day of PE. All children need inside pumps to stay in school. Please name ALL items of clothing.



#### Geography/History

**Geography**– Place knowledge, human and physical geography, Geographical skills and fieldwork.

**History**– Observing artefacts and sources.

#### R.E / PSHE

RE:

Year 1—Special Events

Year 2—New Life, Lent and Easter

PSHE:

Living in the Wider World

Health and Wellbeing

Year 1 – What can we do with money?

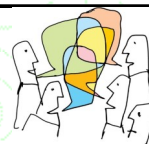
Year 2 – What helps us to stay safe?

#### Forest Schools

**Forest Schools is on Monday 20th February**

**It would be really helpful if your child came to school in warm, waterproof clothing, with a pair of wellies and some indoor shoes to change into.**

If you have any questions, concerns or want to discuss any aspect of your child's learning, please contact the office to arrange a time to speak to a member of the Year 1/2 teaching team before or after school, on any day!



## Attendance

Thank you for sending your children to school every day and arriving at their designated time so that we are all ready to begin the days learning. As you know, 'Every Day Counts'

